



## Wairarapa Endurance & CTR Club

**Daisy Bank Endurance Rides (open & novice) 23 & 24 October 2021**

**National 40-79 km Series Ride (for 40 & 60km rides)**

Please note if you want to leave before prize giving please bring a large self-addressed envelope.

### Endurance Ride Saturday

Registration: Saturday from 1:00 pm	Classes O = Open I = Intermediate J = Junior N = Novice	Senior ride fees	Junior ride fees	Pre-ride vetting Saturday	Start Saturday 23 Oct
40 km	I, J, N	\$50	\$45	1:00 pm	2:00 pm
15 km - Fun ride	Intro	\$15	\$15	2:00 pm	3:00 pm

### Endurance Ride Sunday

Registration: Saturday from 4:30 pm or half an hour before vetting for Sunday	Classes O = Open I = Intermediate J = Junior N = Novice	Senior ride fees	Junior ride fees	Pre-ride vetting Saturday & Sunday	Start Sunday 24 Oct
80 km (3 loops)	O, J, N	\$95	\$90	Saturday 5:00 pm – 7:00 pm	6:00 am
60 km	I, J, N	\$75	\$70	Saturday 5:00 pm – 7:00 pm	7:00 am
40 km	I, J, N	\$50	\$45	Saturday or 7:00 am Sunday	8:00 am
15 km - Fun ride	Intro	\$15	\$15	9:00 am	10:00 am

#### Directions – Ride Base:

- Go to Martinborough – head south out of Martinborough on Lake Ferry Rd for about 7k
- Turn left into Dry River Rd – 2.5 k to base – next to Luna Winery

#### *Pot Luck BBQ Tea Saturday Night – All Welcome*

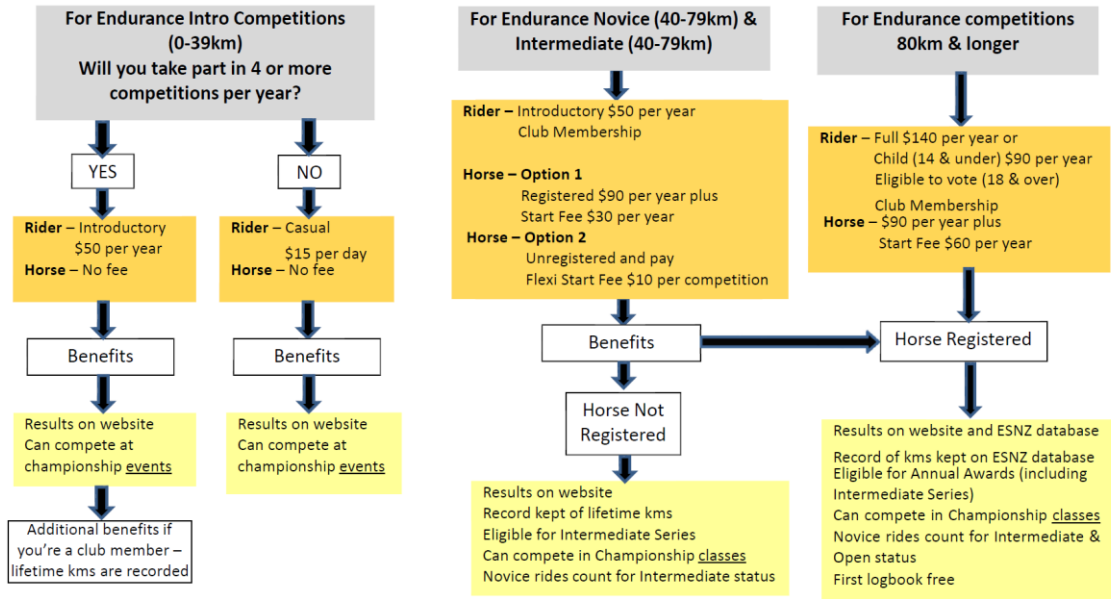
*Overnight camping available –Yarding at the ride base MUST meet mandatory standards – see ESNZ website for requirements No Dogs Please*

**Contacts:** Frank Aldridge - 0274 303 838



## Endurance Membership & Registration

Proposed effective from 1<sup>st</sup> August 2020



**Note: Riders and horses can compete at levels lower than what they are qualified for**

Effective from 1st August 2020

## Endurance/ CTR

# Do I/my horse need to be registered?

